

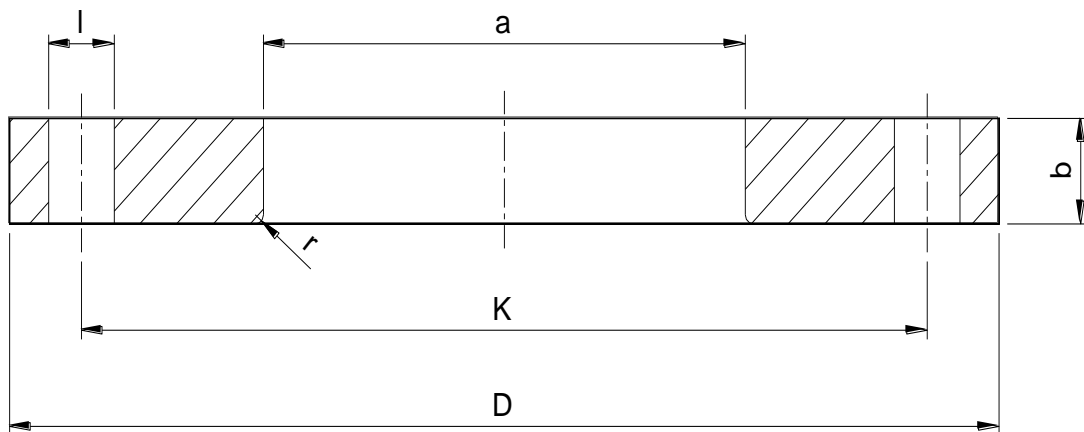
# **AERODINÂMICA** **EQUIPAMENTOS INDUSTRIAIS**

## **FLANGES**

Norma ANSI B 16.5 150 lb/pol<sup>2</sup>

Dimensional **IPEX**

DN pol	D	a	k	b	l		Nr Furos
1/2	95	28	60	12	16		4
3/4	105	34	70	14	16		4
1	115	42	79	16	16		4
1.1/4	140	51	89	16	16		4
1.1/2	150	62	98	25	16		4
2	165	78	121	29	19		4
2.1/2	185	92	140	24	19		4
3	200	110	152	24	19		4
4	220	133	190	27	19		8
5	250	167	216	27	22		8
6	285	190	241	31	22		8
8	340	250	298	36	22		8
10	406	310	362	43	26		12
12	483	348	432	44	26		12



Referência do material: PVC  
Todas as medidas em milímetros (mm)